

**A REVIEW ON THE MARINE FISHERIES RESOURCES AS
USED FOR SURIMI RAW MATERIALS IN VIETNAM**

VU VIET HA

RESEARCH INSTITUTE FOR MARINE FISHERIES (RIMF)

224. LELAI STR., HAI PHONG

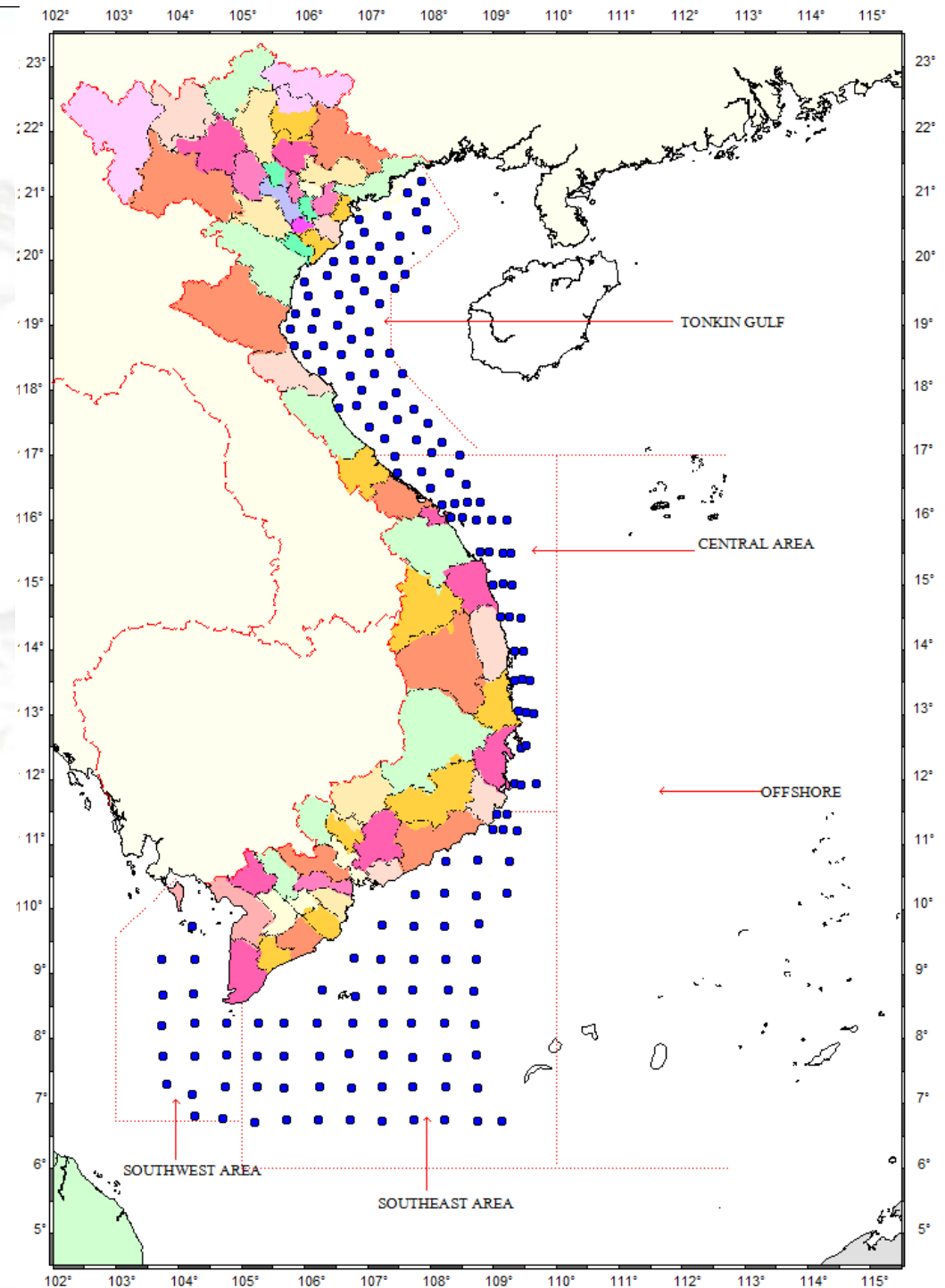
Email: vvha@rimf.org.vn



4 Trawlable Areas:

- The Tonkin Gulf: 17°30' to the North
- Central Area: 11°30'N to 17°30'N
- Southeast Area: 11°30'N to the South and 105°00' to the East
- Southwest Area: 150°00'E to the West

Bottom Trawl Surveys
were conducted in 2004
and 2005 covering all
trawl-able waters of
Vietnam



Species as used for Surimi raw materials

- Lizard fish (Synodontidae)
 - Lizard fish is widely distributed in the continental shelf of Vietnam with high concentration in the gulf of Tonkin and the southeast waters
 - The group mainly comprises of genus: Saurida, Trachinocephalus and Synodus.
 - Total biomass of the Lizard fish was estimated about 100 thousand tons in 2004; decreased sharply in the survey in 2005, to be 57 thousand tons
- Threadfin beam (Nemipteridae)
 - The main threadfin bream species caught in Vietnamese waters including *Nemipterus peronii*, *N. bathybius*, *N. nemurus*, *N. mesoprion*, *N. virgatus*, *N. tambuloides*, *N. japonicus* and *N. marginatus*.
 - Distributed mostly in the middle of the Tonkin gulf and edges of the southern waters
 - The trawlable biomass was estimated approximately 40 thousand tons in 2004 and 30 thousand tons in 2005



- Croaker (Sciaenidae)

- The most economically important species are Greyfin croaker (*Pennahia anea*), Silver croaker (*P. argentata*), Big head pennar croaker (*P. macrocephalus*), Pawak croaker (*P. pawak*) and Belanger's croaker (*Johnius belangerii*)
- Mainly distributed in the mouth of the Tonkin gulf and shallow waters of the southwest area
- Total biomass was estimated about 11 thousand tons in 2004 and increased to be over 18 thousand tons in 2005 based on the bottom trawl surveys

- Goat fish (Mullidae)

- Mainly comprised of Bensasi goat fish (*Upeneus bensasi*), Goldband goatfish (*U. moluccensis*), Freckled goatfish (*U. tragula*) and Sulphur goatfish (*U. vita*).
- Distributed in high concentration in the southeast area
- Trawl-able biomass was estimated approximately 36 thousand tons in 2004 and sharply dropped in 2005 to be 17.6 thousand tons

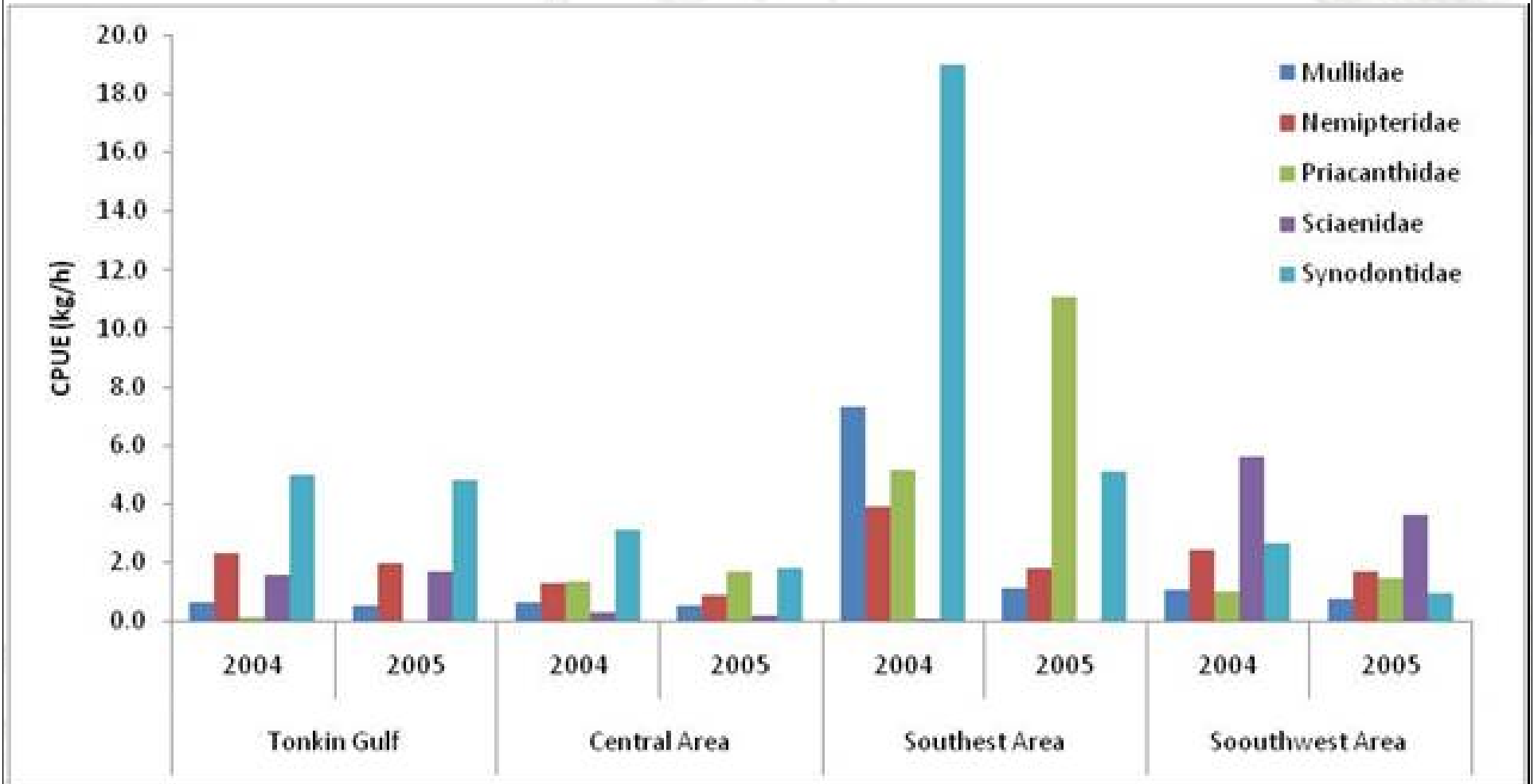


- Red big eye (Priacanthidae)

- The most popular species of Red big eye group (Priacanthidae) are Red big eye (*Priacanthus macracanthus*) and Purple spotted big eye (*P. tayenus*)
- Distributed widely in Vietnamese waters especially in the southeast area
- Total biomass was estimated to be 28 thousand tons in 2004 and increased to over 37 thousand tons in 2005.

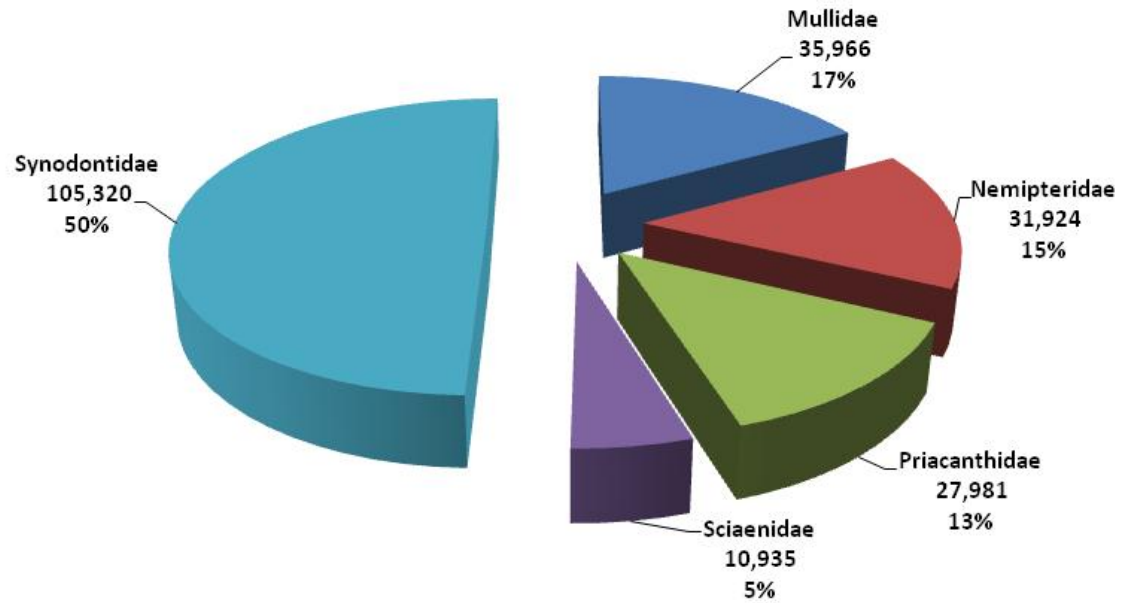


Mean CPUE of fish families in different areas based on the bottom trawl surveys in 2004 & 2005

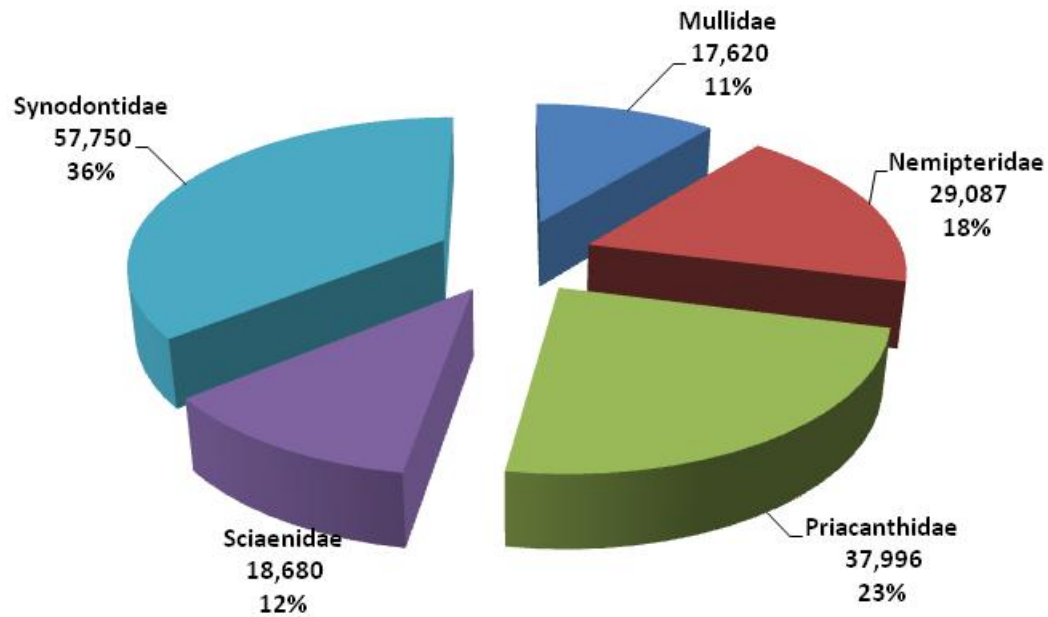


~ 210 thousand tons in 2004

Trawlable Biomass in 2004



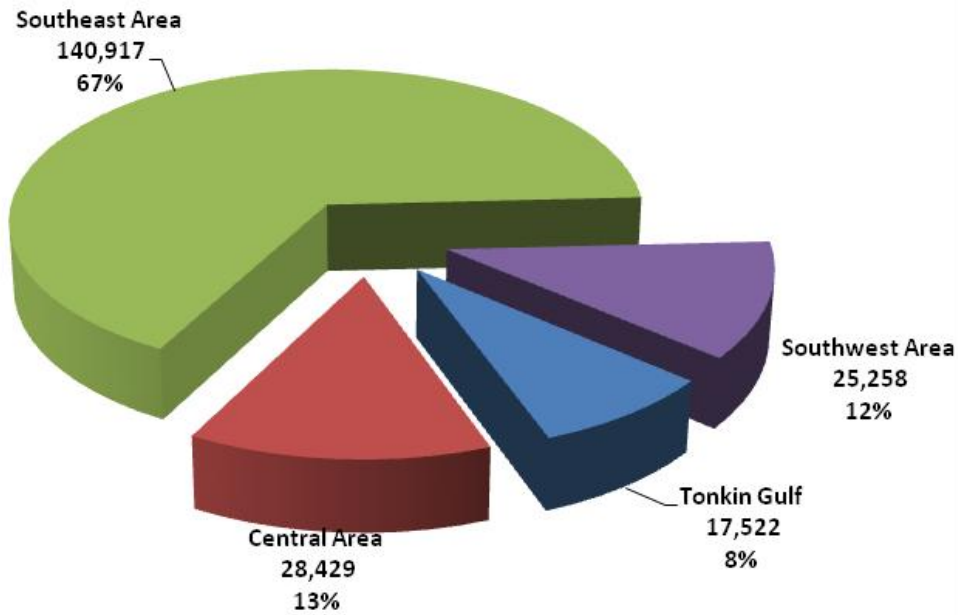
Trawlable Biomass in 2005



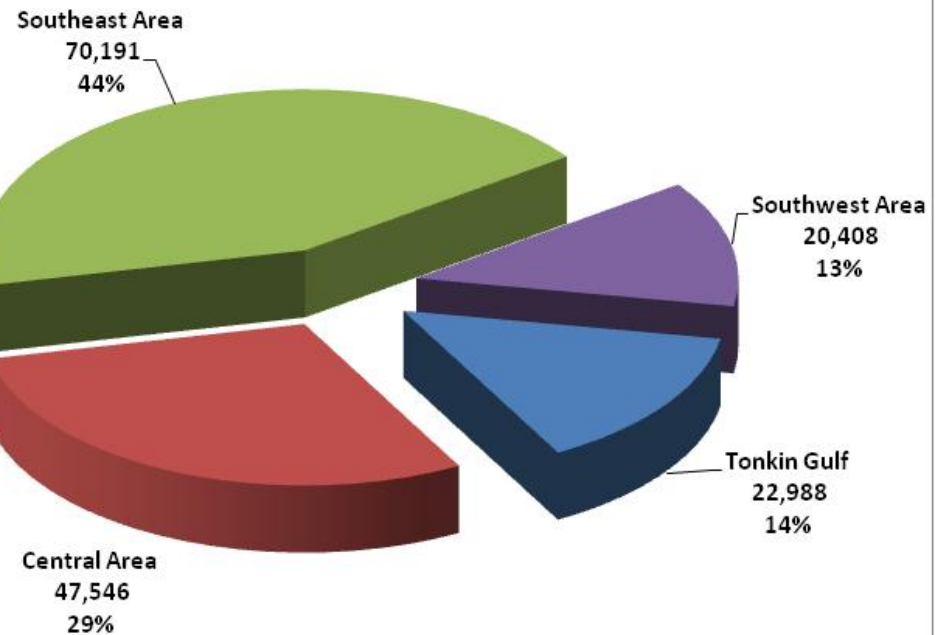
~ 160 thousand tons in 2005

Regional biomass stratified

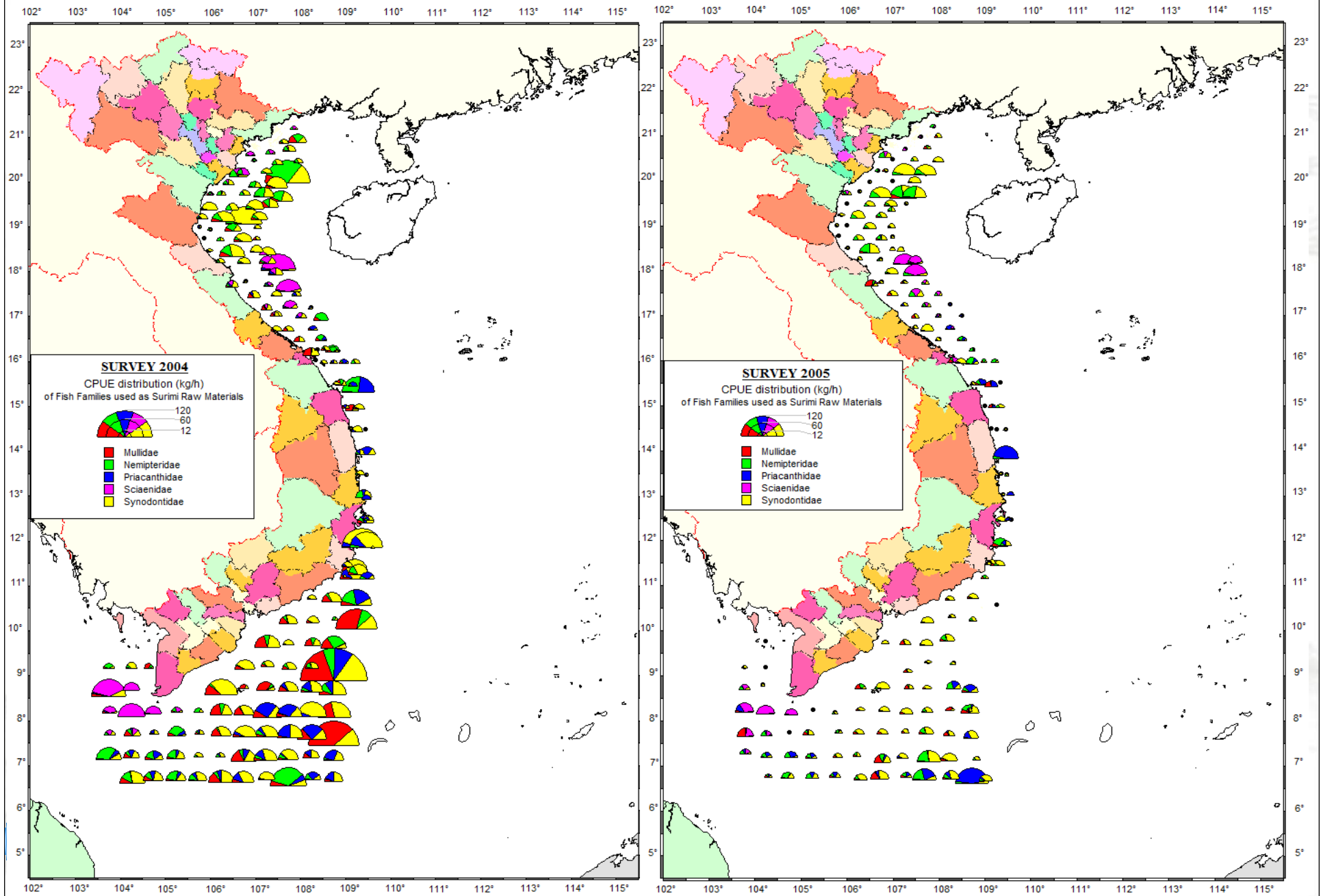
Trawlable Biomass in 2004



Trawlable Biomass in 2005



Catch rate of fish groups at sampling stations



Thanks for your attention!

